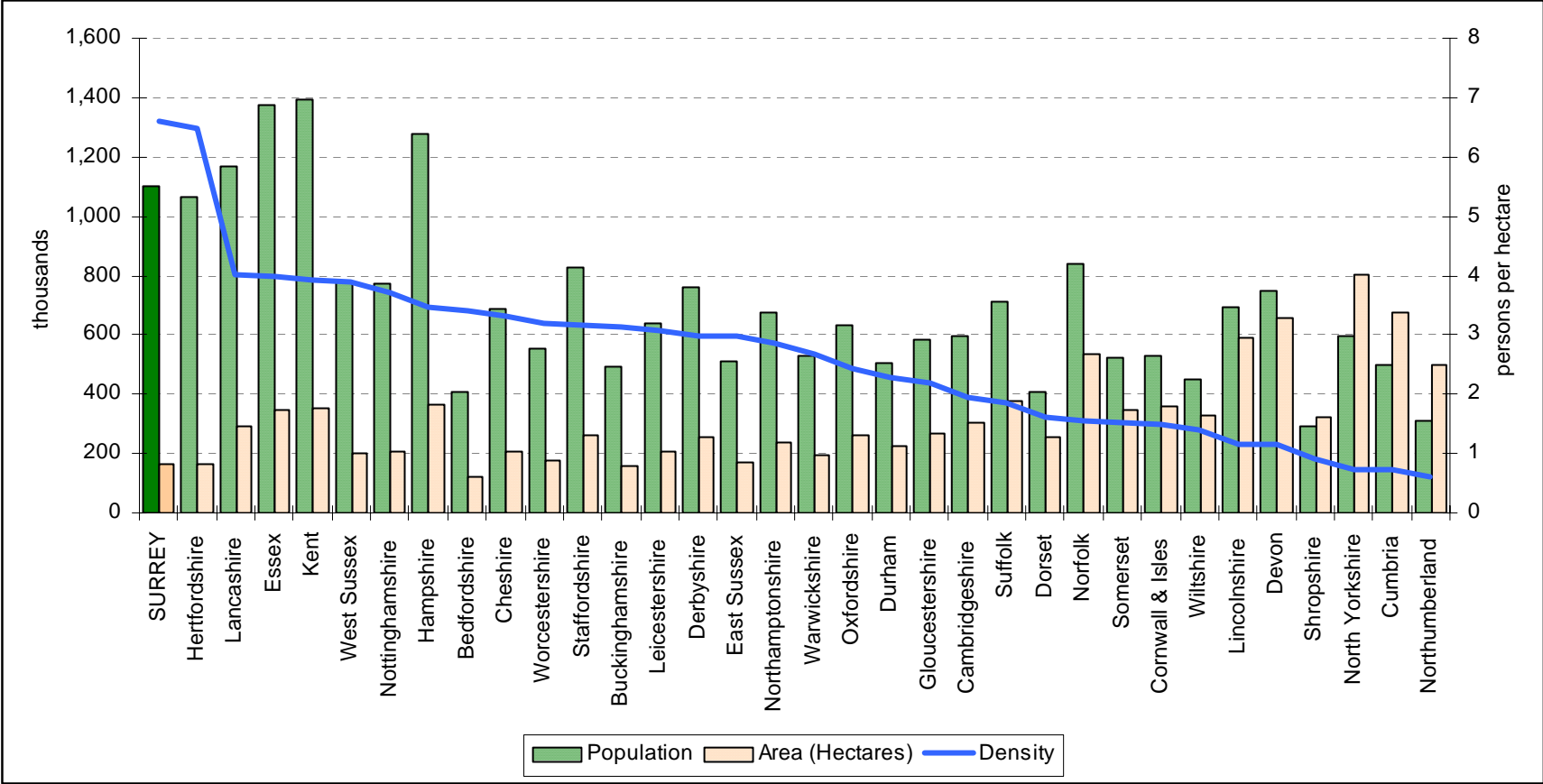


State of the County 2008

Population

Surrey is the most densely populated shire county in England

➤ Population Density 2007

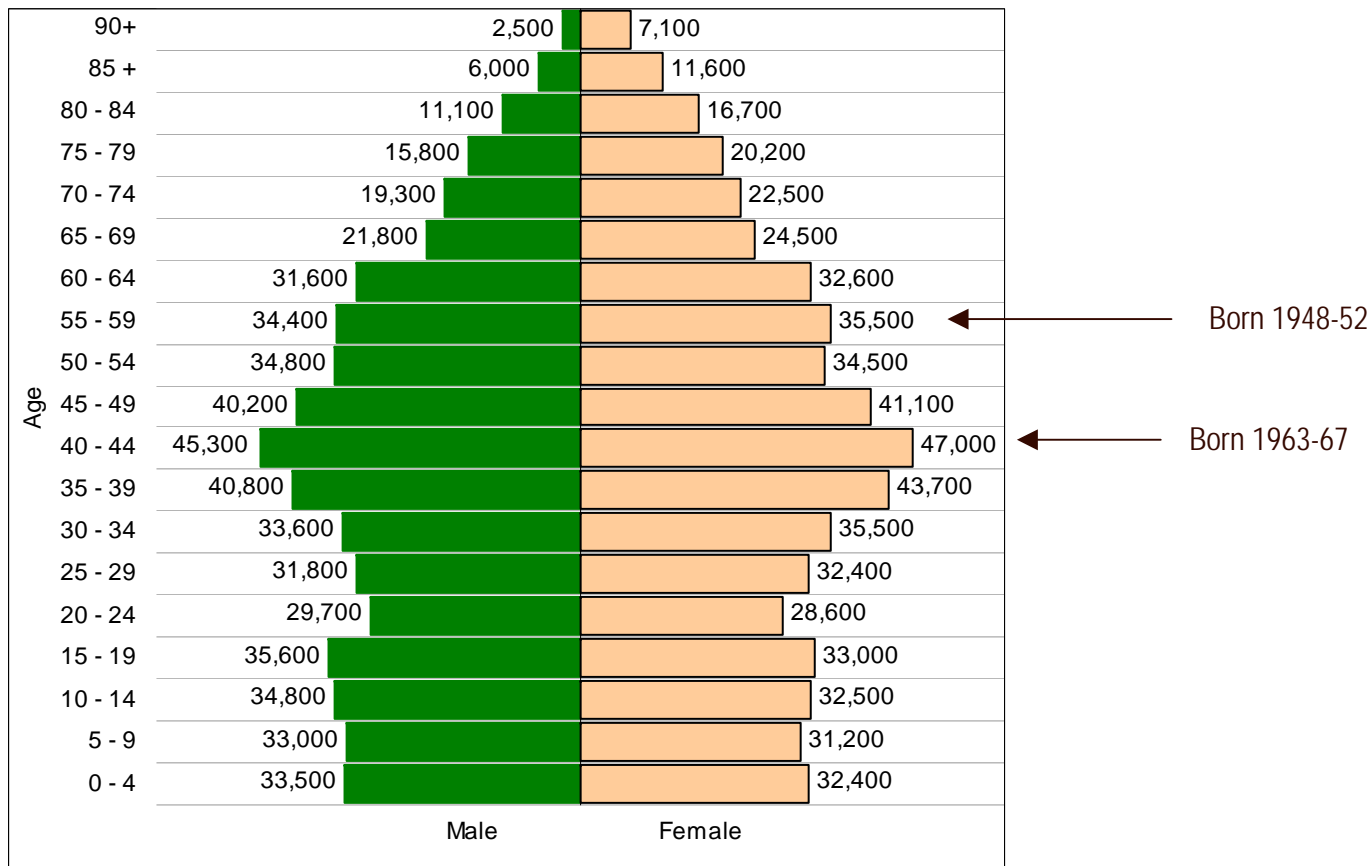


Source: Office for National Statistics

Post-war and 60s baby booms are reflected in the age structure of Surrey's population

➤ 2007 Mid Year Estimates of Population

Estimated population of Surrey at 30 June 2007: 1,098,200

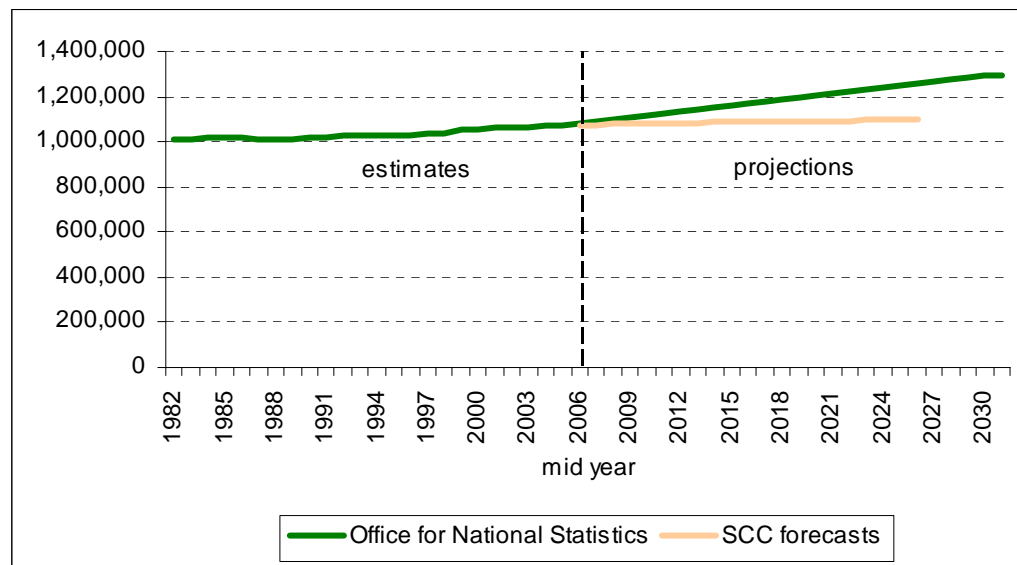


Source: Office for National Statistics

Based on recent trends, Surrey's population is projected to rise steadily over the next 25 years at a rate of about 0.75% per year. Forecasts constrained to planned house building show smaller growth

➤ Estimated / projected population of Surrey 1982-2031

Surrey's population has increased every year since 1981 except for 1986/87 when unusually high numbers of people moving out of Surrey coupled with a smaller than usual number moving in, resulted in net out-migration within UK of over 10,000. This coincided with rapidly rising house prices during the housing boom of the late 80s.



Office for National Statistics population projections are trend based, which means assumptions for future levels of births, deaths and migration are based on observed levels over the previous five years. They show what the population will be if recent trends in these continue. The projections do not take into account any future policy changes that have not yet occurred.

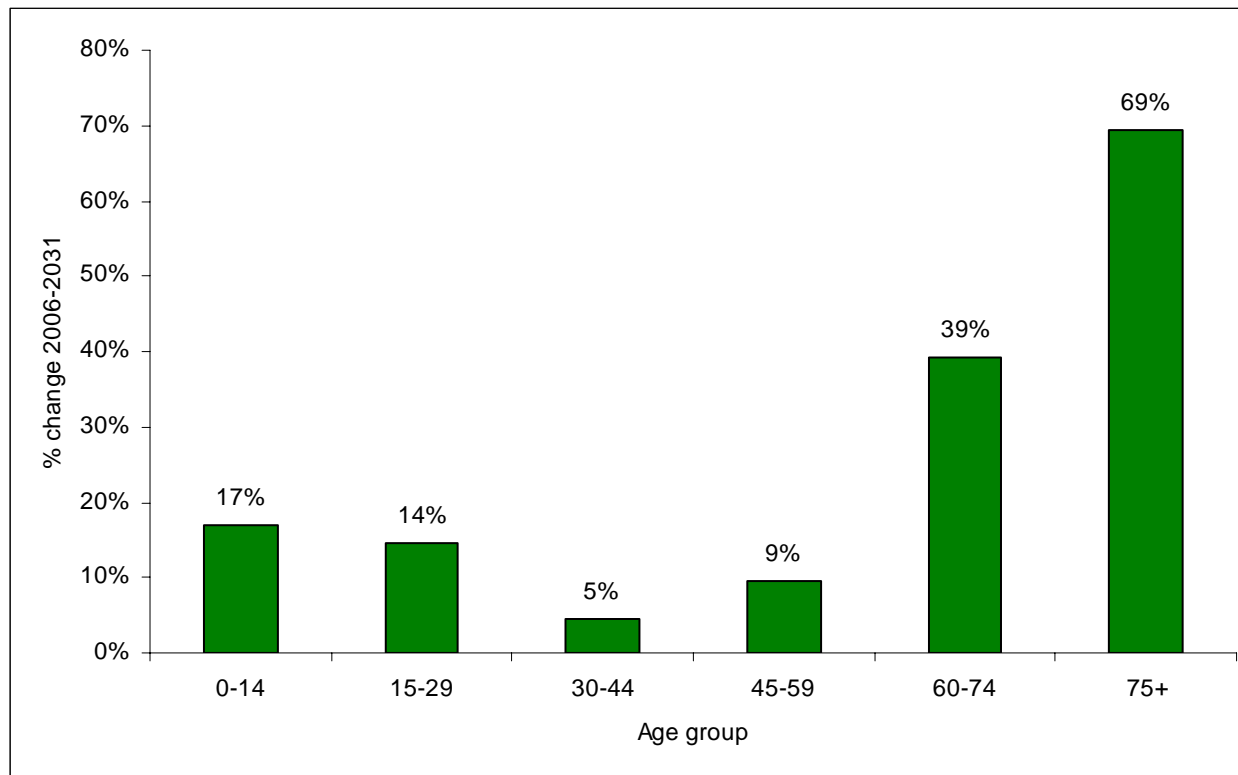
This level of population growth would require an average of about 4,500 additional dwellings per year. Surrey County Council forecasts using the Chelmer Population and Housing Model constrain population growth to the housing allocation in the draft South East Plan (2,360 per year). This suggests a much lower rate of population growth of around 0.15% per year.

Projected growth in Surrey's population reflects similar projected growth in the South East and England as a whole.

Source: Office for National Statistics.
 Mid year estimates of population 1982-2006 for current county boundary (revised in light of 2001 Census results), 2006 based subnational population projections
 Surrey County Council Dwelling constrained forecasts based on housing allocation in draft South East Plan

Biggest increases will be in the over 60s age groups

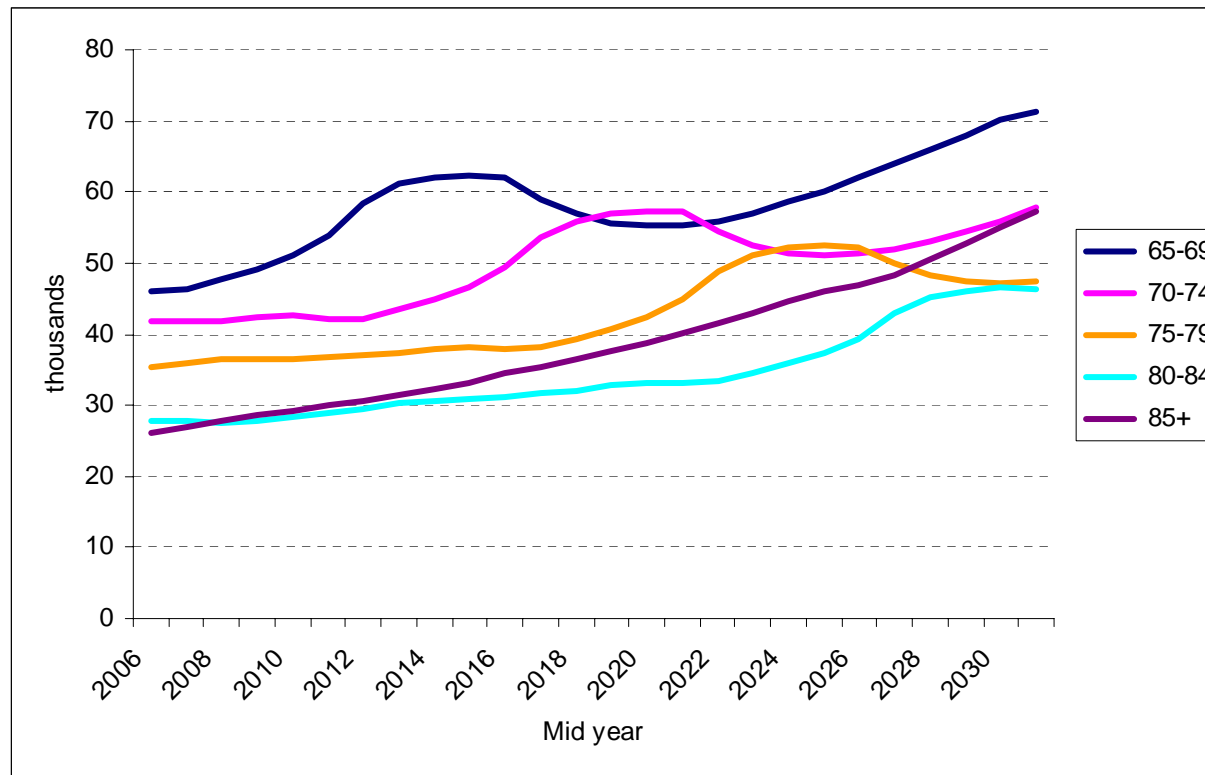
- 2006 based population projections for Surrey
Percentage change 2006-2031 by age group



Source: Office for National Statistics 2006 based population projections

Number of over 85s is projected to increase by 120% by 2031 with a 68% increase in 80 to 84 age group

➤ 2006 based population projections for Surrey: Projected number of older people (aged 65+) by age group

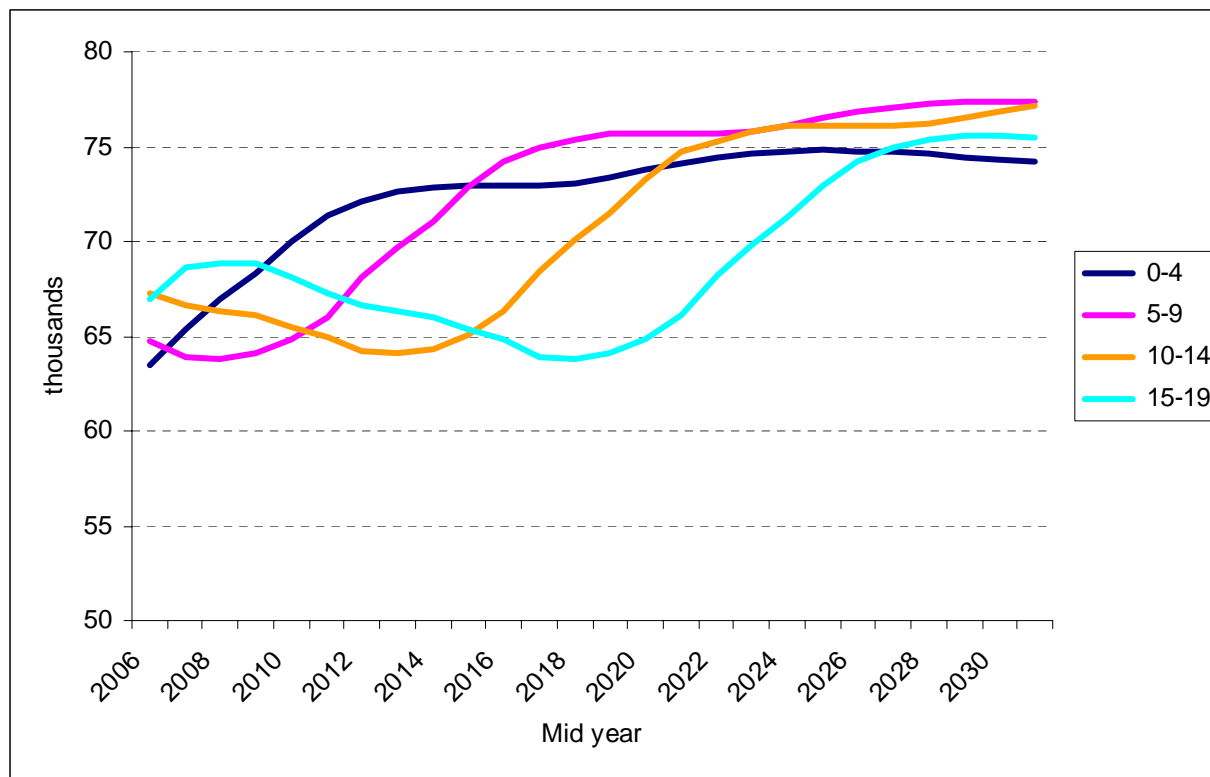


The peaks in the chart show the effect of the ageing of the post-war baby boom

Source: Office for National Statistics 2006 based population projections

Population in under 19 age groups will fluctuate, with all groups except 0-4 declining at some point during the next 25 years

➤ 2006 based population projections for Surrey: Projected number of children (aged 0-19) by age group

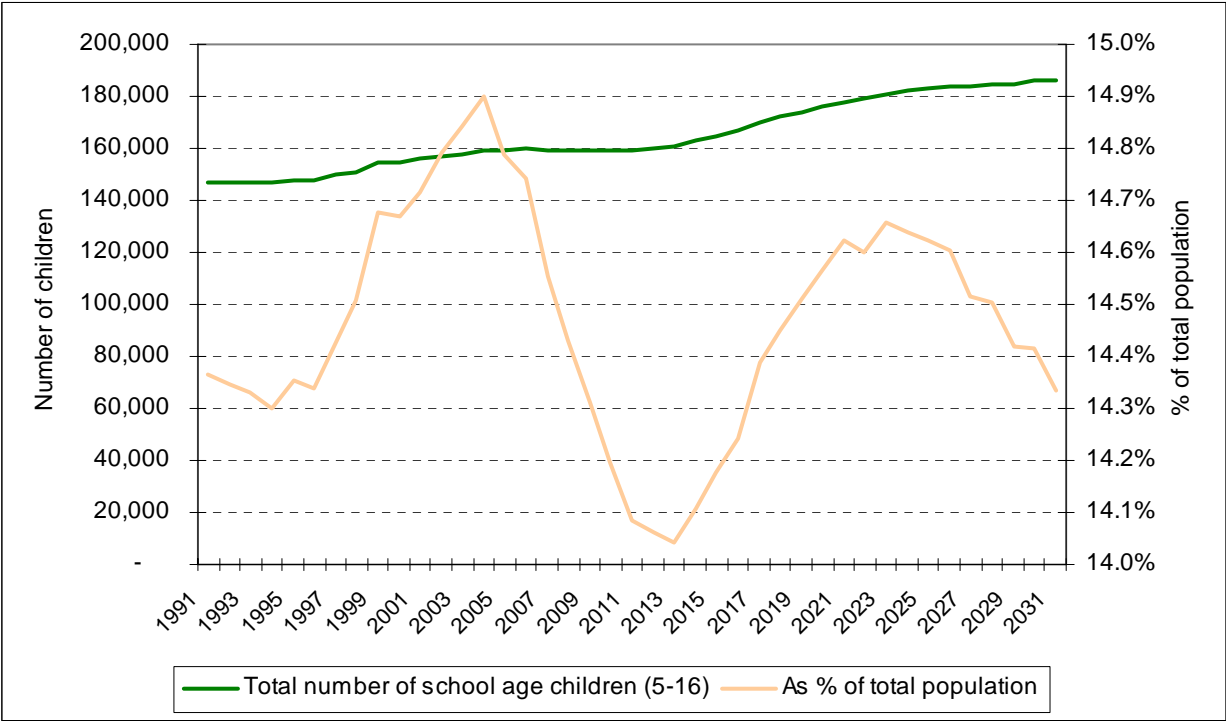


The troughs in the chart reflect the low number of births in 2001 and 2002.

Source: Office for National Statistics 2006 based population projections

Overall number of children of school age is projected to remain fairly static until 2011 and then rise steadily

➤ Estimated and projected number of school age children in Surrey (aged 5-16)

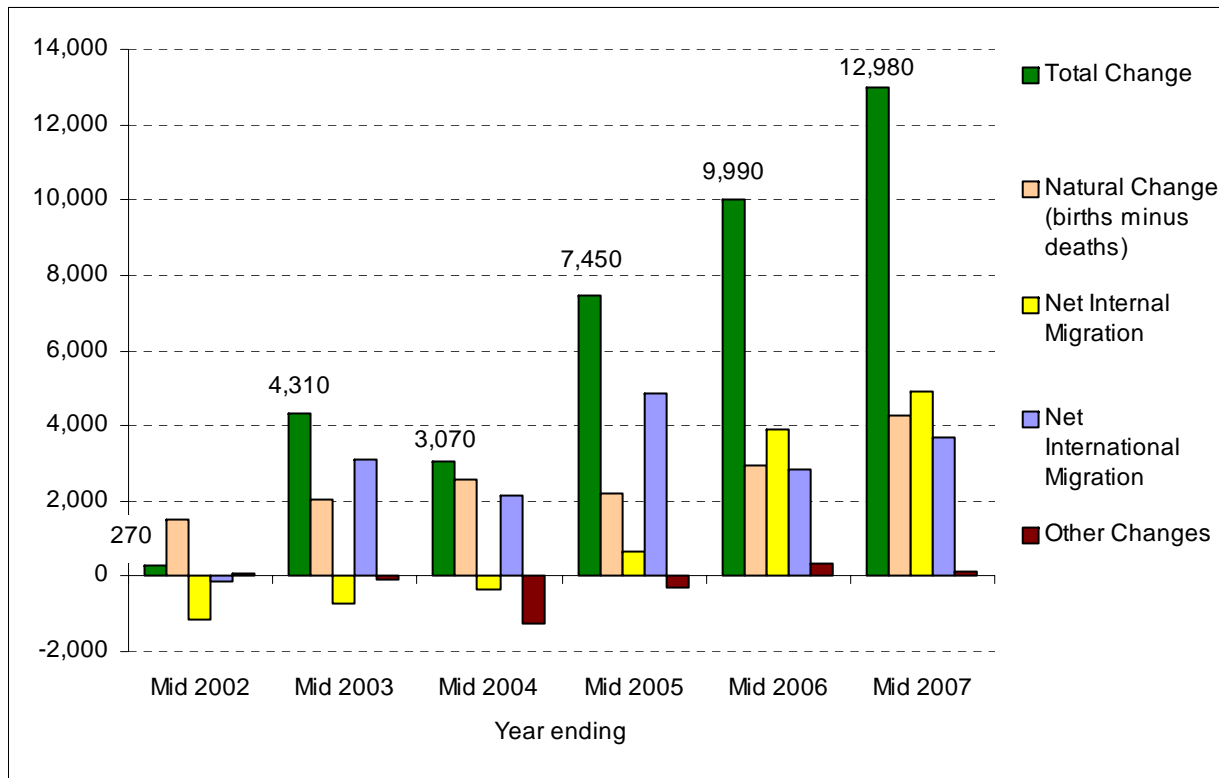


This would mean around 20,000 additional school places will be required between 2012 and 2031

Source: Office for National Statistics Mid Year estimates 1991-2006, 2006 based population projections (revised)

Births outnumber deaths, but migration is the biggest driver of population change

➤ Components of population change derived from the Mid Year Estimates 2001 to 2007



There are around 12-13,000 births in Surrey each year and 10,000 deaths. Thus natural change adds around 2,000 to Surrey's population annually.

Approximately 50-55,000 people move into Surrey each year from the rest of the UK. A similar number move out. Net internal migration is usually in the range -2,000 to +2,000. However after a net outflow in the early years of the century, the net inflow of nearly 5,000 between 2006-07 is the biggest seen in recent years.

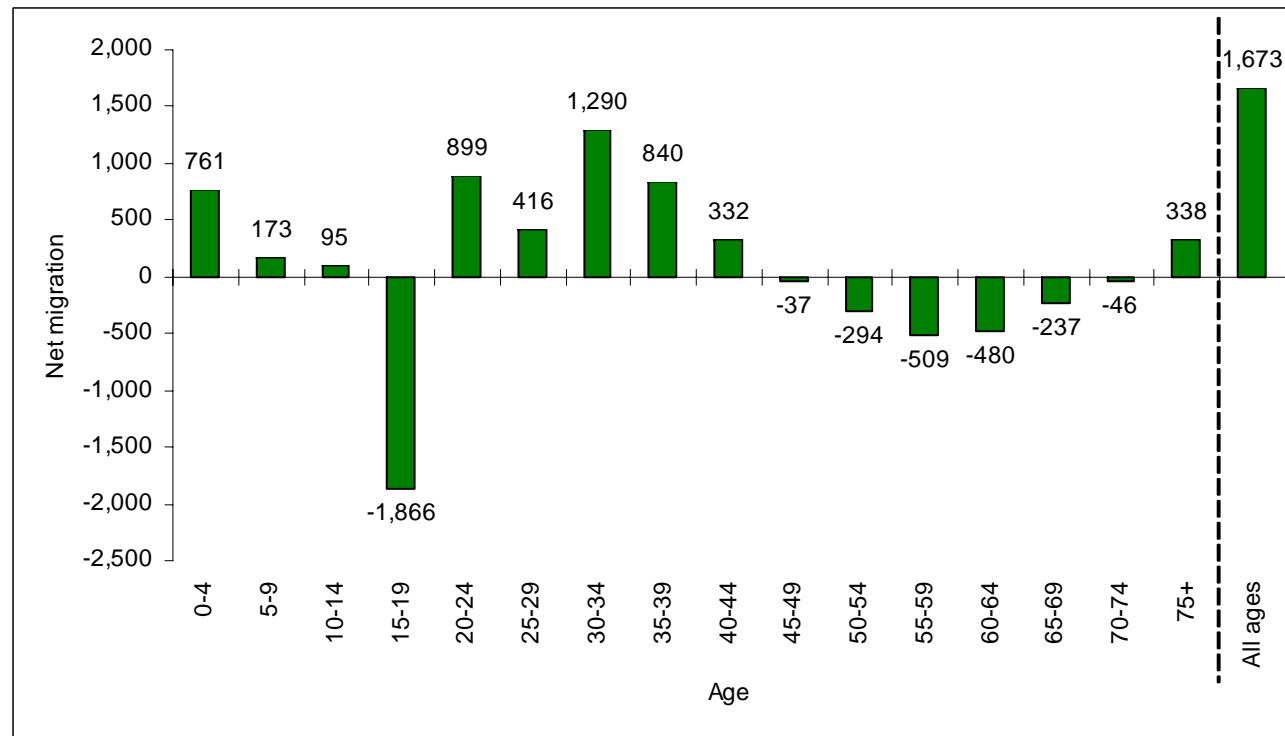
There is no reliable source of international migration at local level. This is estimated from national surveys.

Other changes include changes to armed forces, prisoners and boarding school pupils.

Source: Office for National Statistics

School leavers and older people tend to move out of Surrey, but families with young children move in

➤ Average annual net migration into Surrey from the UK, 2002-2007



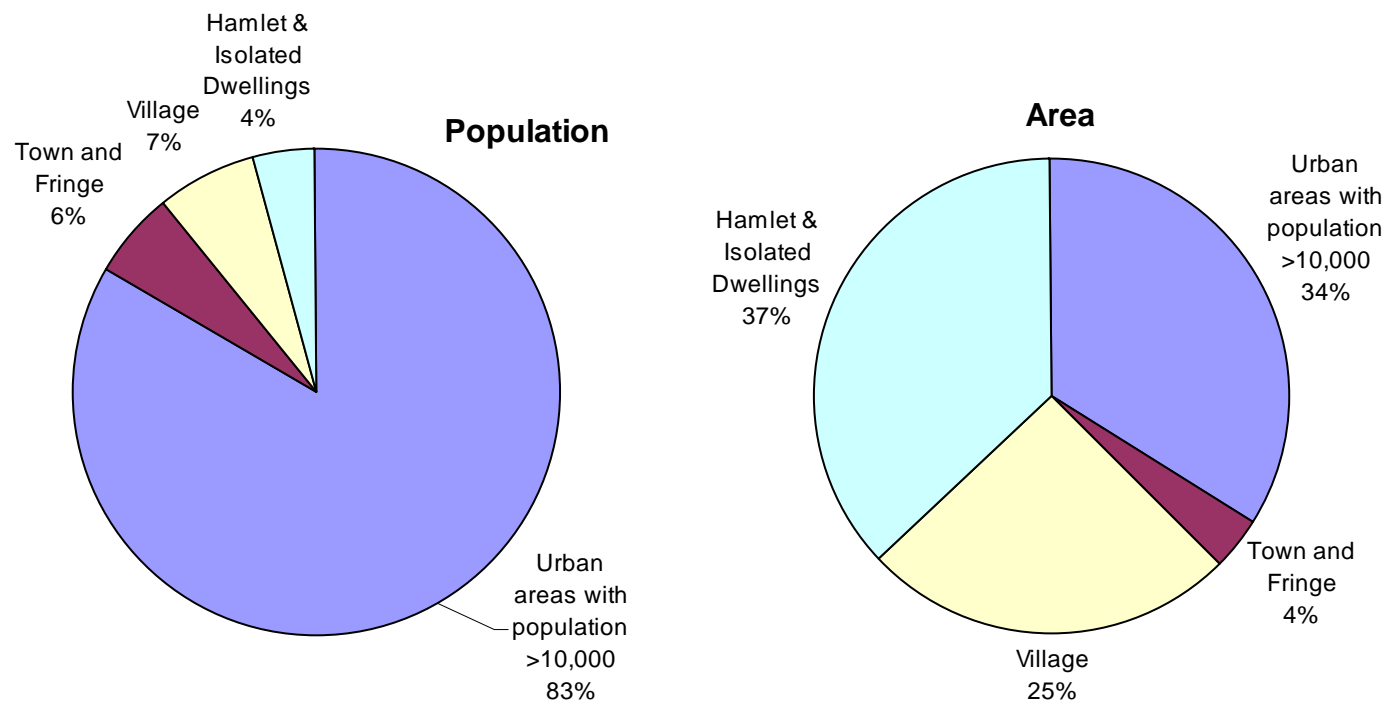
Net migration is the number of people moving into Surrey from within the UK minus those who moving out. These figures do not include movements beyond the UK.

Over these 5 years, Surrey gained an average of 1,673 people per year from the rest of the UK.

Source: Office for National Statistics: National Health Service Central Register

34% of Surrey's total area is classified as urban, but 83% of the population live there. Just 4% live in the 37% of the county which is very rural.

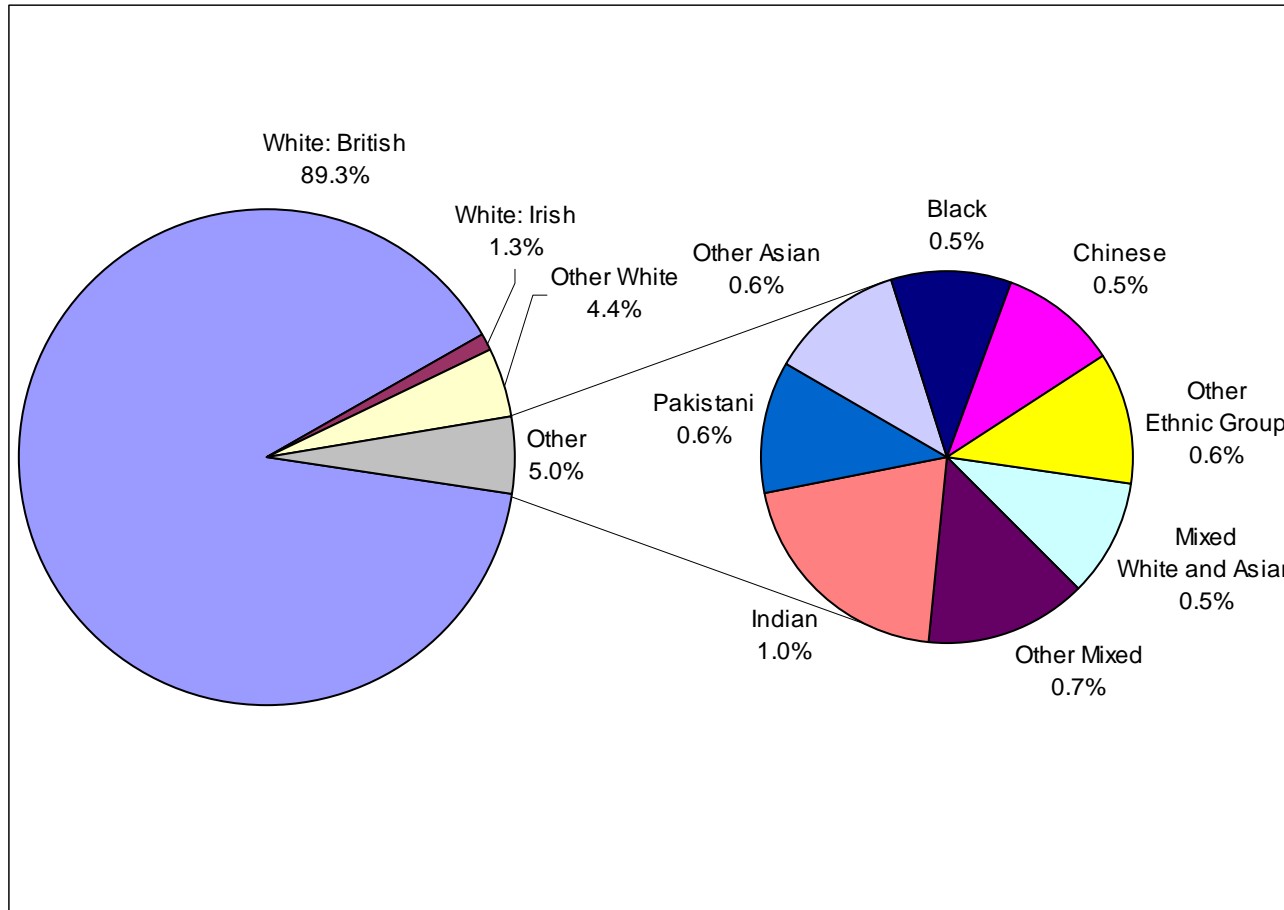
➤ Distribution of Surrey's 2001 Census population and area (hectares) to Rural and Urban Area Classification 2004 using output area classification



Source: DEFRA, ODPM, NAW, ONS and Countryside Agency: Rural and Urban Area Classification 2004

Surrey has a relatively low population from ethnic minorities, with 95% white. The ethnic minority population has grown since 1991 when 97% were white.

➤ 2001 Census: Surrey population by ethnic origin



Since 1991, the Census has collected information about ethnic origin, but there have been no reliable statistics in the intercensal period. The Office for National Statistics have recognized the need for this and have produced some "experimental" estimates of population by ethnicity in line with the Mid Year population estimates.

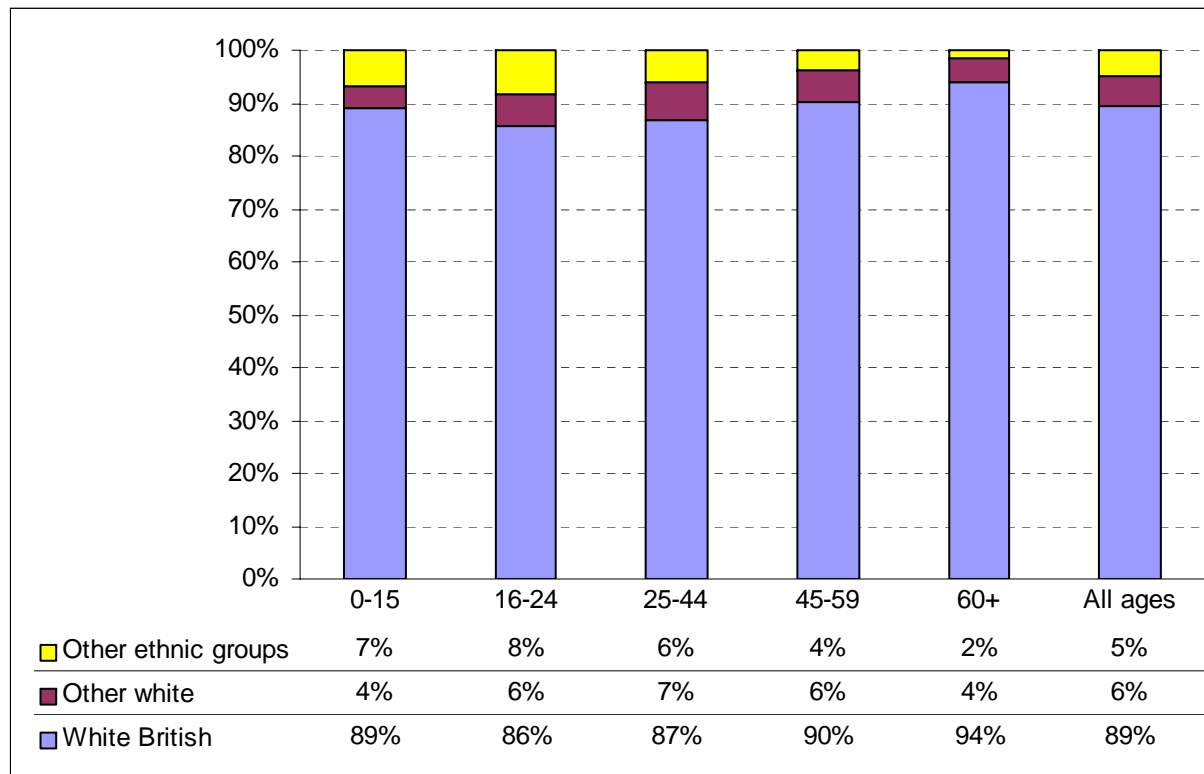
These statistics do not yet meet the rigorous quality standards of National Statistics and should be used with caution, but provide some trend data.

These estimates suggest that the proportion of the population from Black and Minority ethnic groups had risen to 7.9% by 2006, with 5.5% from "other white" ethnicity.

Source: 2001 Census

Even without further international migration, the proportion from ethnic minorities will continue to increase as the more diverse younger groups get older.

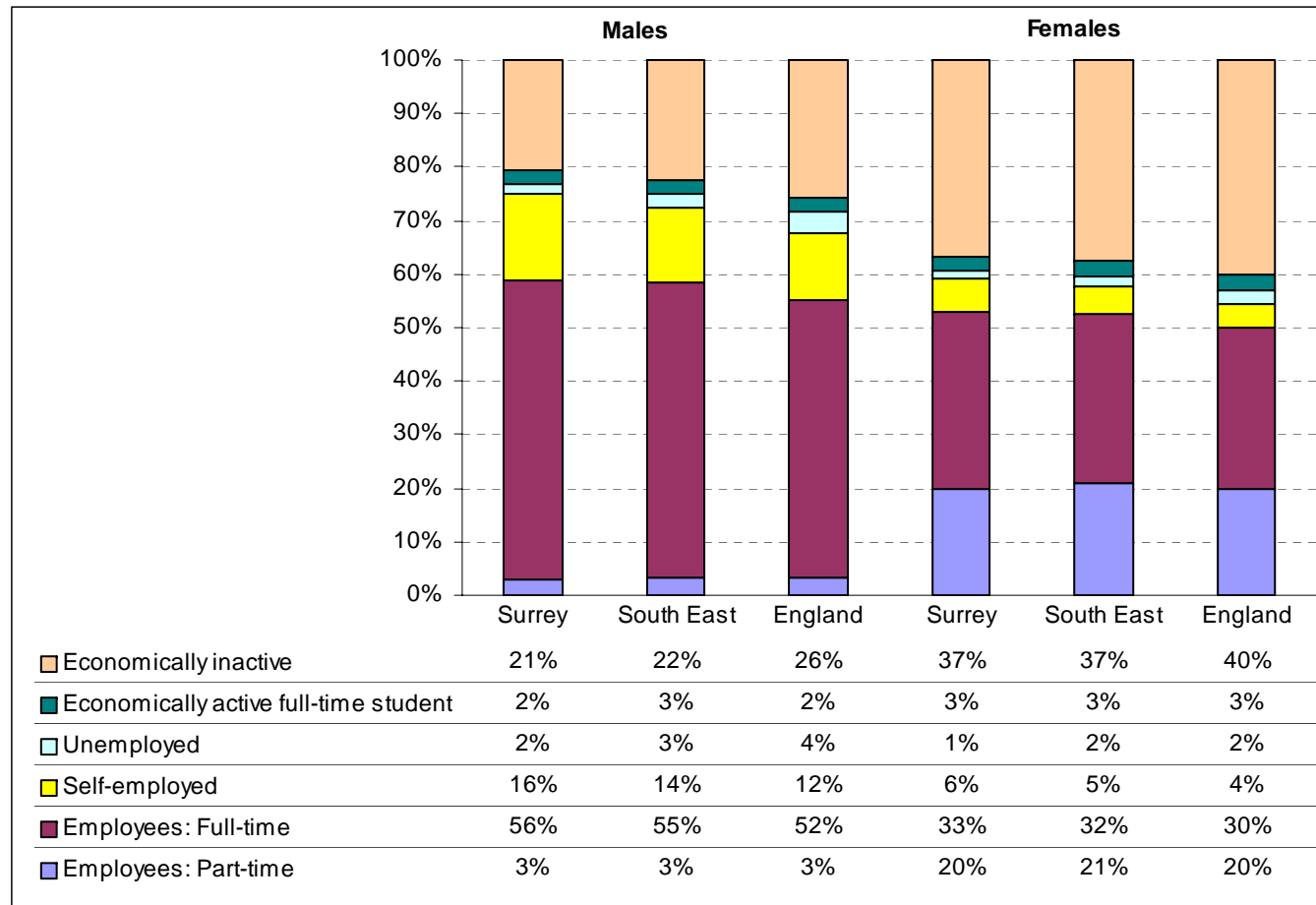
➤ 2001 Census: Surrey population by ethnic origin by age



Source: 2001 Census

Surrey has a high level of economic activity. 79% of men and 63% of women are economically active, compared with 74% and 60% nationally.

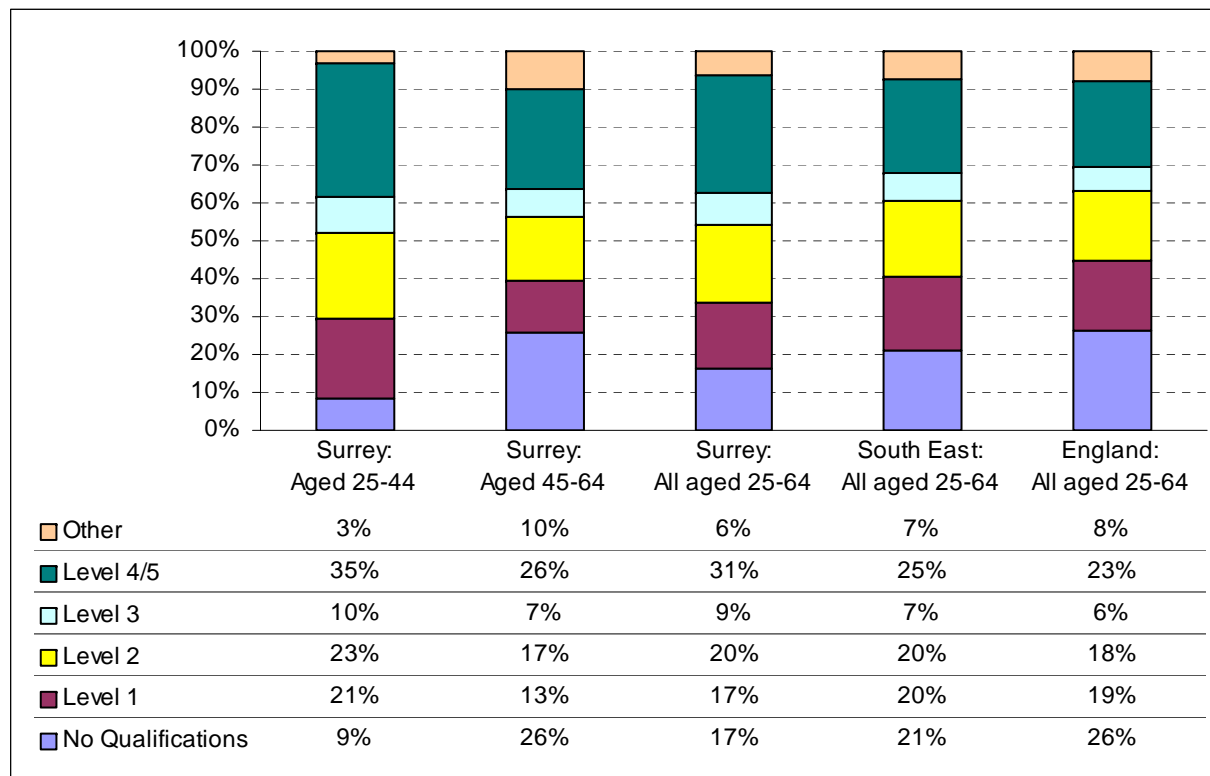
➤ 2001 Census: Economic Activity (people aged 16-74)



Source: 2001 Census

Surrey has a highly qualified workforce. 31% of the population aged 25-64 have a degree or equivalent compared to 23% nationally.

➤ 2001 Census: Qualifications



By age 25 most people will have completed their formal education

17% of people aged 25-64 have no qualifications at all compared with 26% nationally.

There are big differences within this age range. 35% of the younger working age (25-44) have a degree with only 9% having no qualification

Level 1: At least 1 GCSE (any grade) or equivalent; NVQ level 1

Level 2: At least 5 GCSEs (grade A-C) or equivalent; NVQ level 2

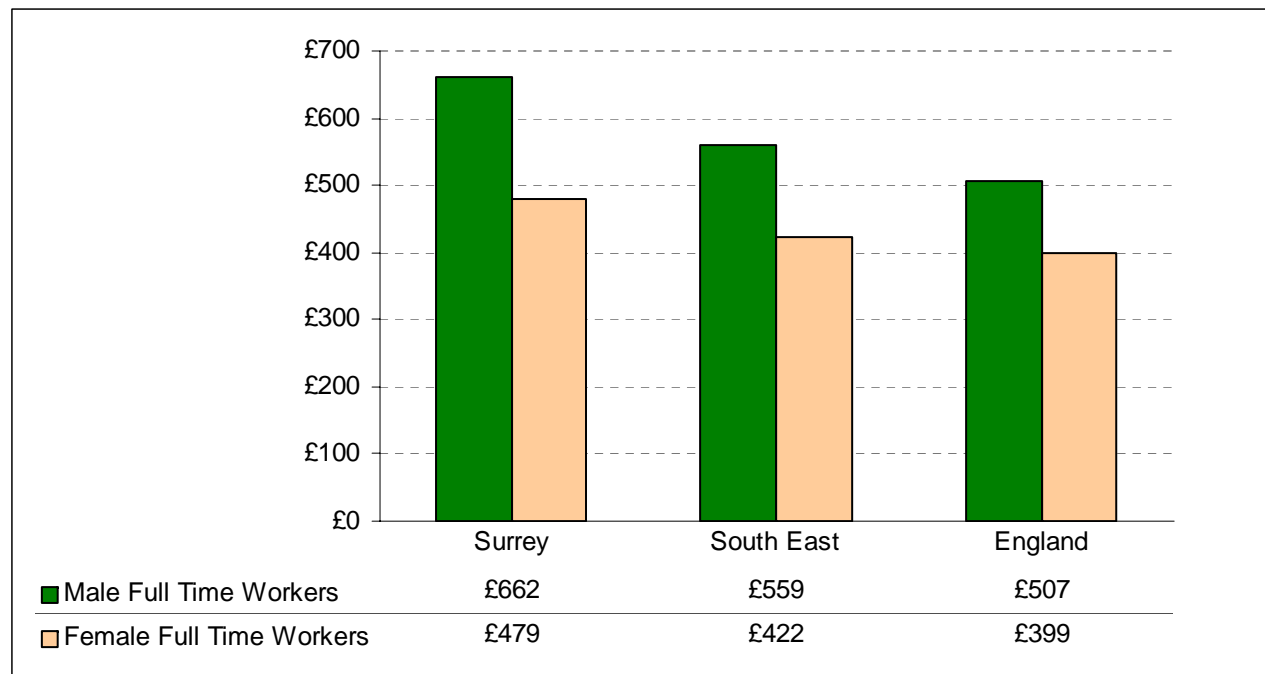
Level 3: At least 2 'A' levels or equivalent; NVQ level 3;

Level 4/5: At least a first degree or equivalent; NVQ levels 4 and 5

Source: 2001 Census

Average earnings of Surrey residents are 30% higher than the national average for men and 20% higher for women

➤ Median gross weekly pay – residents (2007)

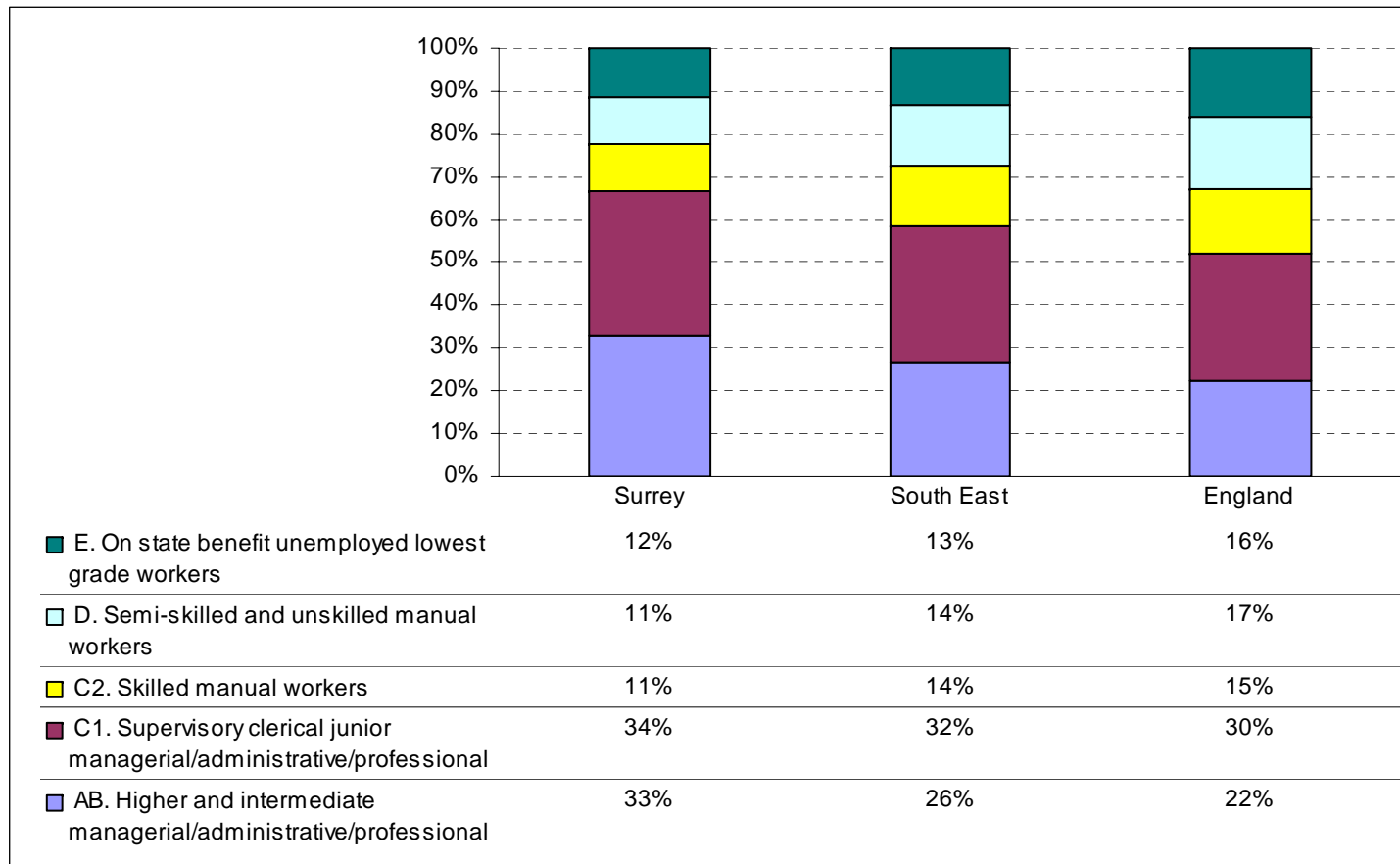


These statistics are based on the median rather than the mean. The median is the value below which 50 per cent of employees fall. It is preferred over the mean for earnings data as it is influenced less by extreme values and because of the skewed distribution of earnings data.

Source: Office for National Statistics - Annual Survey of Hours and Earnings

Surrey has high proportions in higher social classes. 67% of Surrey residents are classed as AB and C1 compared to 52% nationally.

➤ 2001 Census: Approximated Social Grade

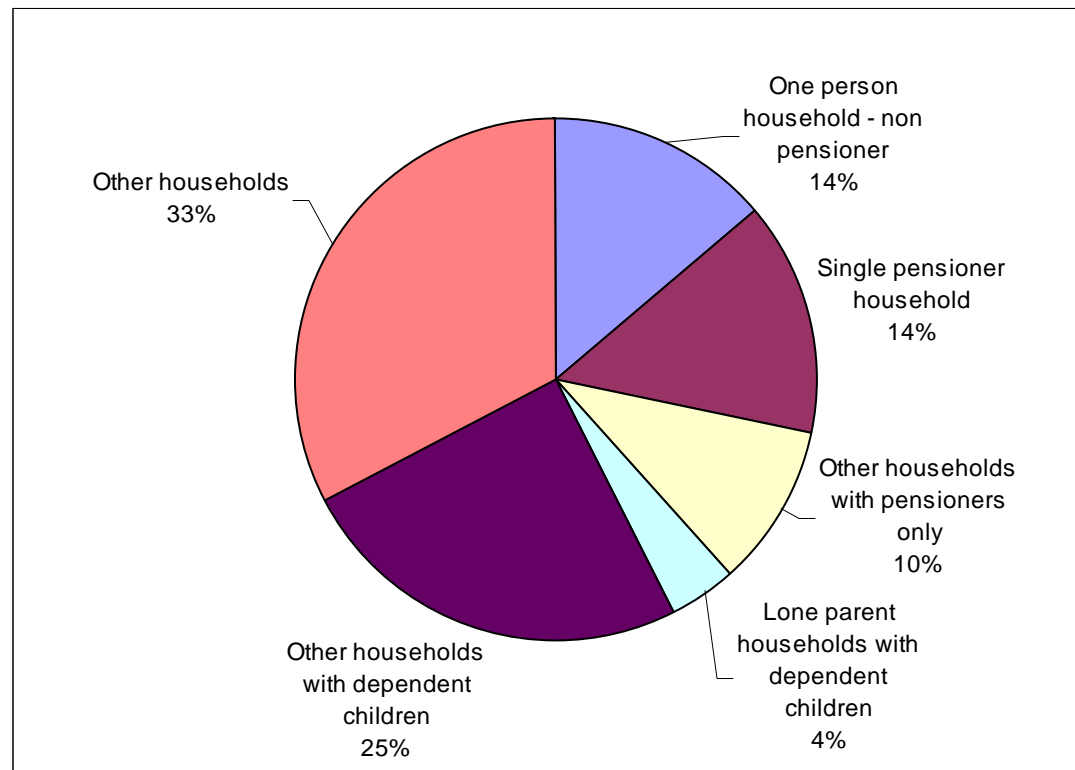


Source: 2001 Census

Social grade is a socio-economic classification used by the Market Research and Marketing Industries. Although it is not possible to allocate social grade precisely from information collected in the Census, the Market Research Society has developed a method for using Census information to provide a good approximation of Social Grade.

28% of Surrey households contain just one person. Half of these are lone pensioners. 29% of households contain dependent children.

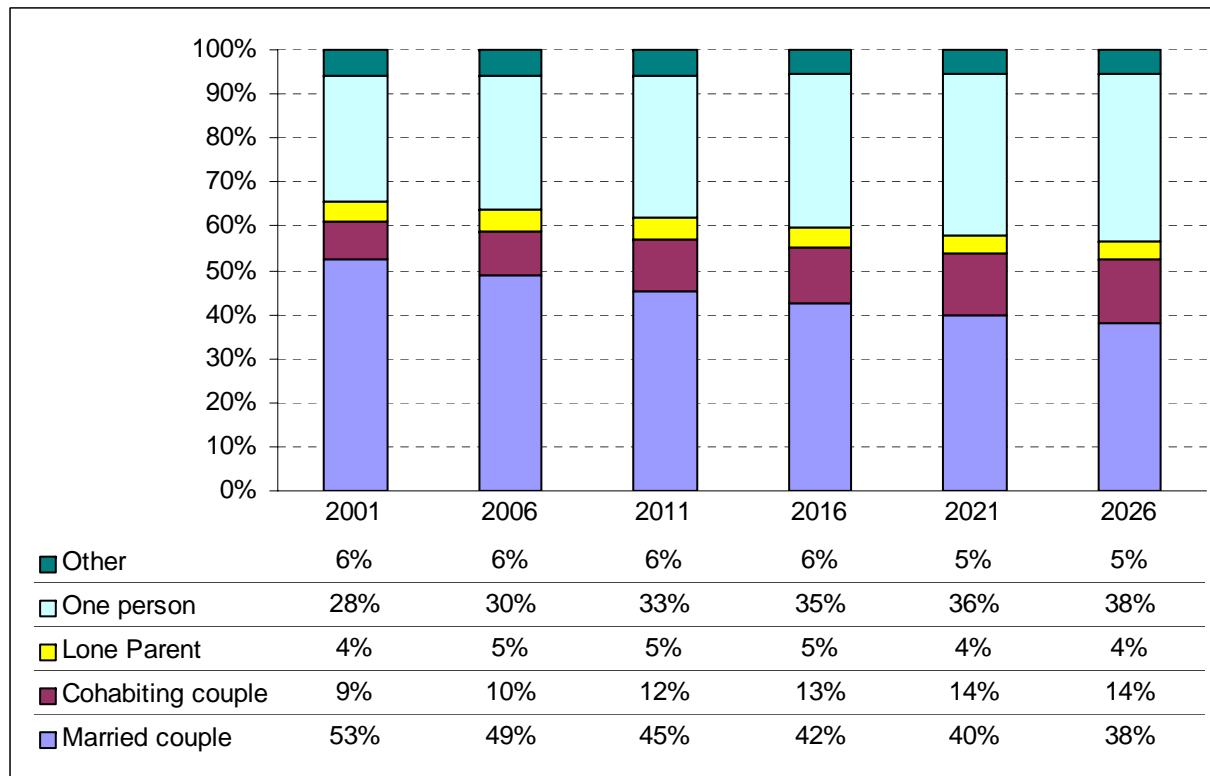
➤ 2001 Census: Composition of Surrey Households



Source: 2001 Census

By 2026 it is projected that 38% of households will contain just one person

➤ DCLG 2004 based household projections by household type: Surrey



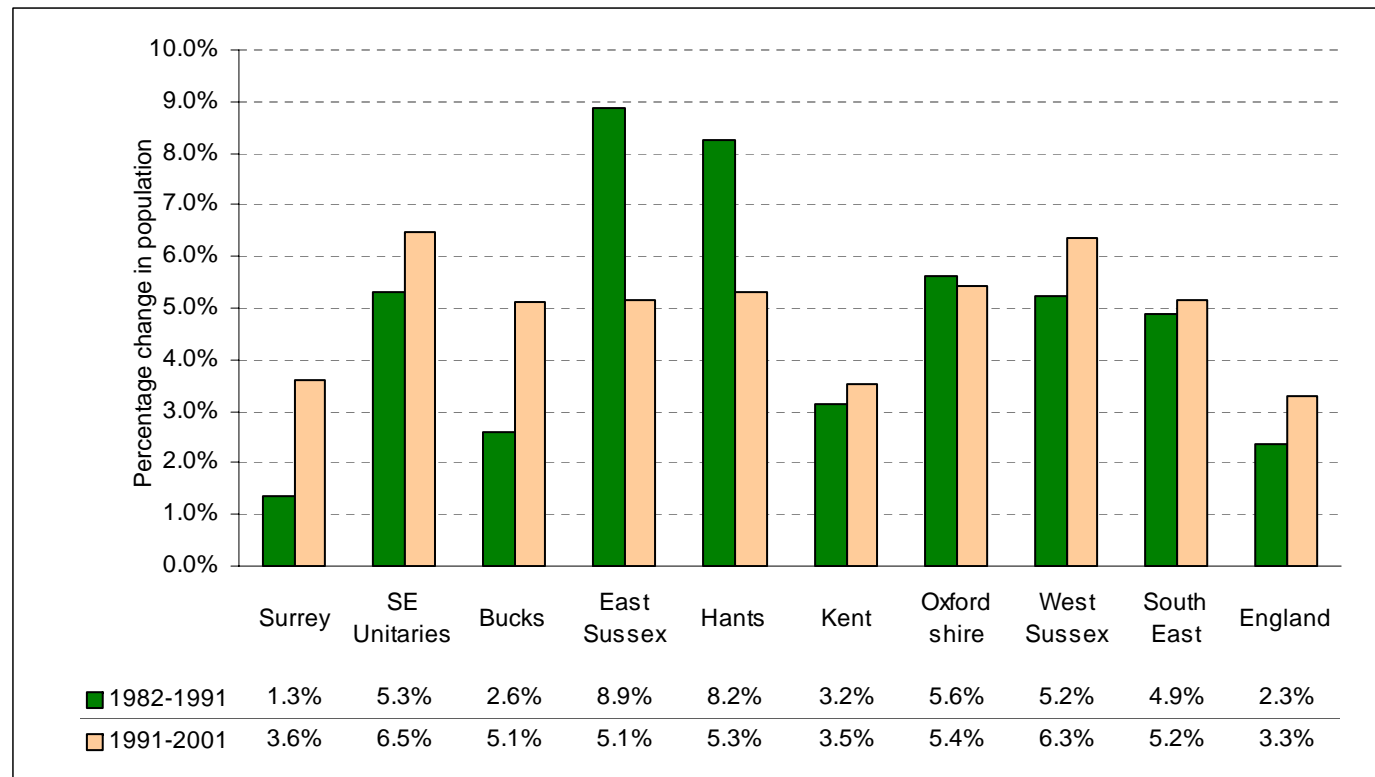
- The proportion of couple households is projected to fall from 61% to 52%
- There will be fewer married couples but more cohabiting couples.
- The proportion of lone parent and other households will remain largely unchanged.
- Average household size is projected to fall from 2.38 in 2001 to 2.16 in 2026

Household Projections are usually published approximately every two years. 2006 based projections are due to be available in March 2009.

Source: Derived from Department for Communities and Local Government unpublished data

Surrey's population has grown more slowly than other south east counties in the last 20 years, especially during the 1980s

➤ Population change: 1982-91 and 1991-2001

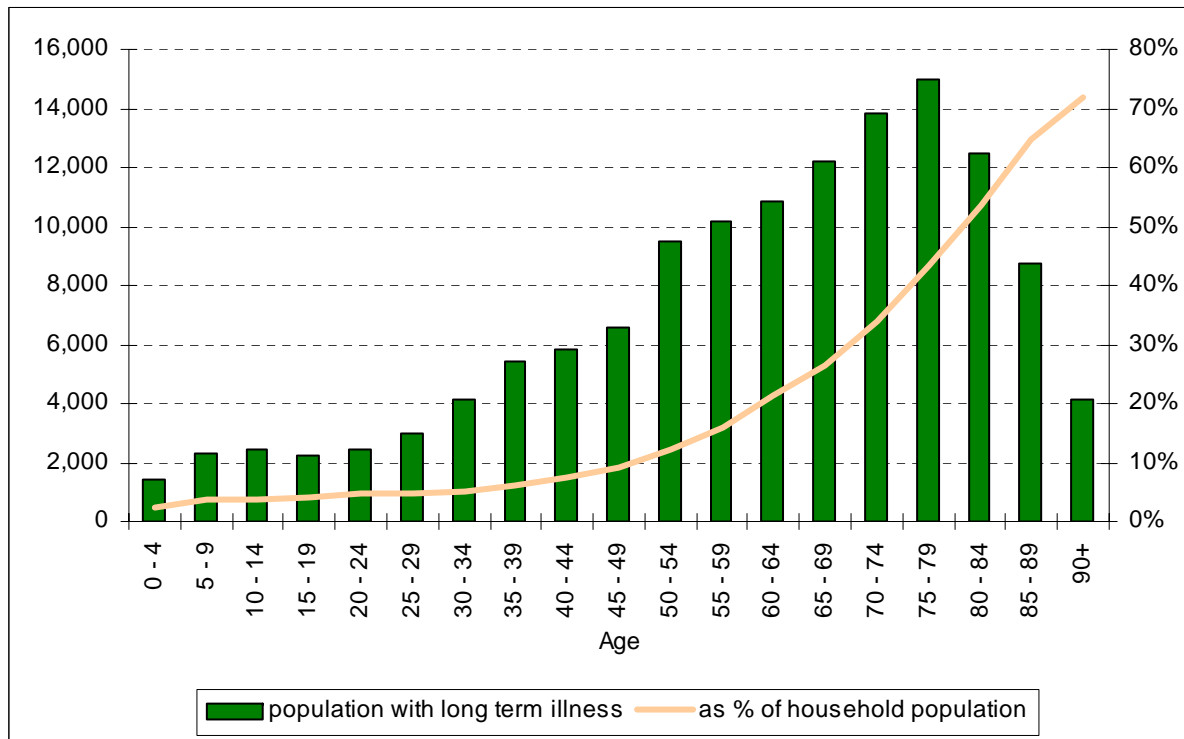


All figures refer to current county boundaries and have been revised in the light of the 2001 Census results

Source: Office for National Statistics

143,200 Surrey residents (13.5%) have a long term illness or health problem. 132,700 of these are living in households.

➤ 2001 Census: Limiting long term illness by age (excludes people in communal establishments)



The census limiting long term illness data has been shown to be closely correlated with a need for a primary health care and social care service

Source: 2001 Census

Surrey has a low birth rate compared with the south east and the country as a whole, but it has been rising in recent years

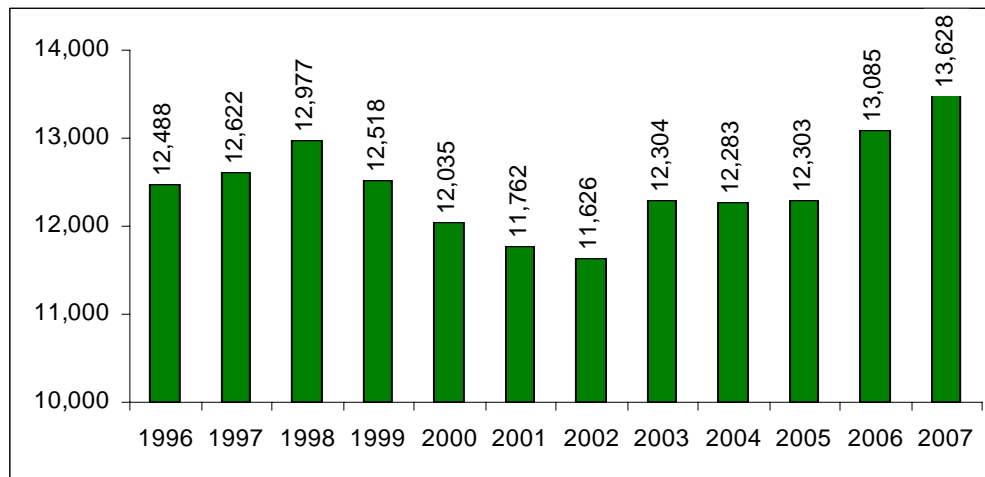
➤ **Total Fertility Rate**

	1991	2000	2001	2002	2003	2004	2005	2006	2007*
Surrey	1.73	1.56	1.57	1.58	1.69	1.71	1.73	1.82	1.89
Buckinghamshire	1.90	1.67	1.67	1.69	1.78	1.86	1.82	1.89	1.89
East Sussex	1.70	1.68	1.71	1.74	1.87	1.93	1.95	1.94	2.00
Hampshire	1.77	1.58	1.63	1.64	1.71	1.79	1.79	1.89	1.93
Kent	1.88	1.70	1.74	1.75	1.80	1.84	1.88	1.94	1.97
Oxfordshire	1.75	1.53	1.54	1.56	1.63	1.71	1.70	1.78	1.81
West Sussex	1.77	1.59	1.68	1.67	1.76	1.87	1.85	1.93	1.97
South East	1.78	1.61	1.62	1.63	1.71	1.77	1.78	1.85	1.90
England	1.82	1.65	1.64	1.65	1.73	1.78	1.80	1.86	1.91

Total Fertility Rate is a measure of the birth rate, which can be defined as the average number of live births that a woman would have if current patterns of fertility persisted throughout her child-bearing life. It excludes the effect of mortality

* provisional

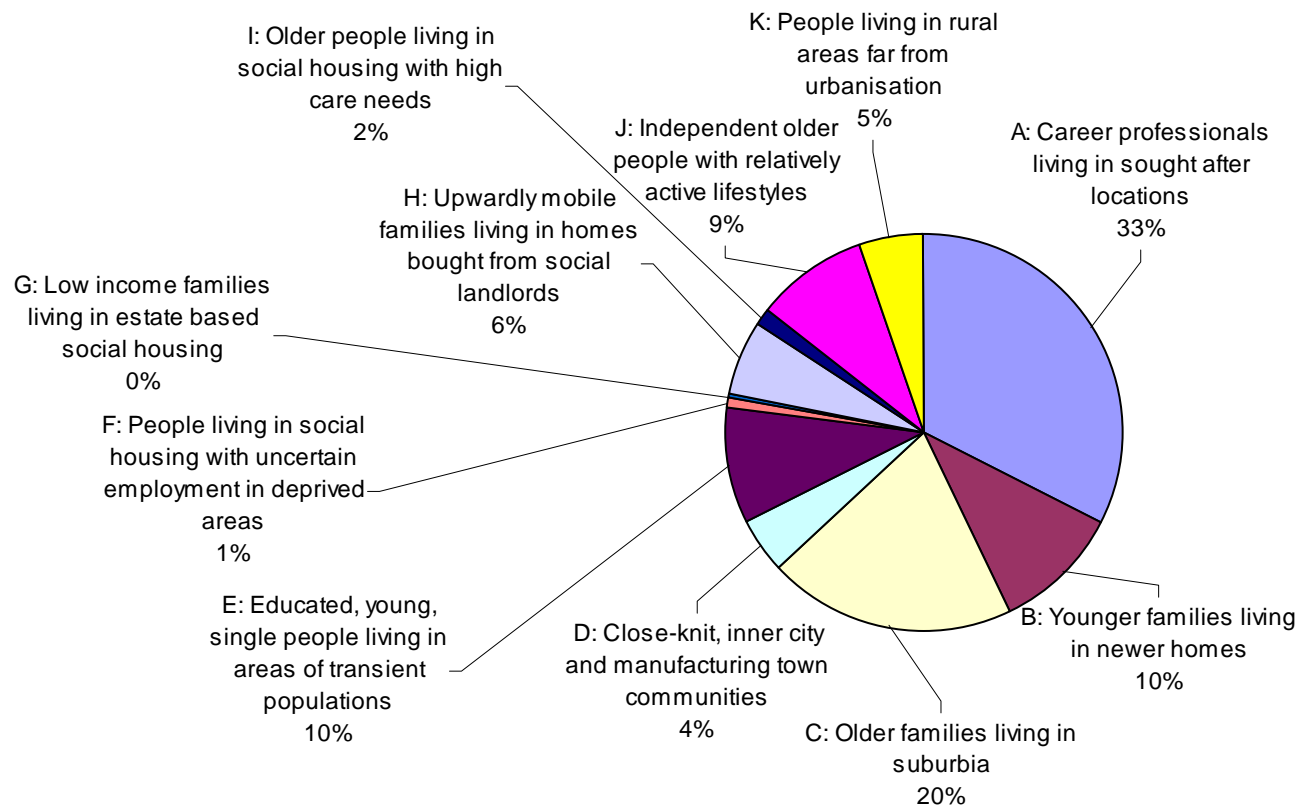
Births in Surrey 1996-2007



Source: Office for National Statistics

According to the MOSAIC classification, one third of Surrey households are described as “Career professionals living in sought after locations”

➤ Distribution of Surrey households by MOSAIC group



Data is from Experian's Mosaic Public Sector. This is a geo-demographic segmentation system which classifies all households and postcodes in the United Kingdom into 61 types aggregated into these 11 groups. It is specifically designed for the public sector to enable targeting of services specific to the needs of the population.

Source: Experian

Just two of the 61 MOSAIC types make up more than a fifth of Surrey' households

Type C19: Attractive older suburbs, typically occupied by families but with increasing singles and childless couples

Type C19 comprises a mixed social profile, but with a bias towards young professionals, residing in interwar semidetached houses. 11.5% of Surrey's households are in this category.

Key Features:

- Young professionals
- Middle aged families
- School age children
- Office and service jobs
- Some self employed
- Good diet and health
- Environmental charities
- Sceptical
- Value customer service

Communication:

- Receptive to**
- Telephone advice lines
- Internet
- Social networks
- Local shops
- Radio, Magazines
- Unreceptive to**
- TV
- Red top newspapers

Type A03: Successful managers living in very large houses in outer suburban locations

Type A03 contains very wealthy people, many of whom are senior business managers, living in large detached houses in outer metropolitan suburbs. 10.7% of Surrey's households are in this category.

Key Features:

- Married
- Teenage children
- Private education
- Corporate careers
- Large homes in suburbs
- Good diet and health
- Care for environment
- Extensive investments
- Confident

Communication:

- Receptive to**
- Internet
- Telephone advice lines
- Unreceptive to**
- Radio
- TV
- Tabloid press

Source: Experian

Surrey is generally regarded as a wealthy county with no real deprivation.

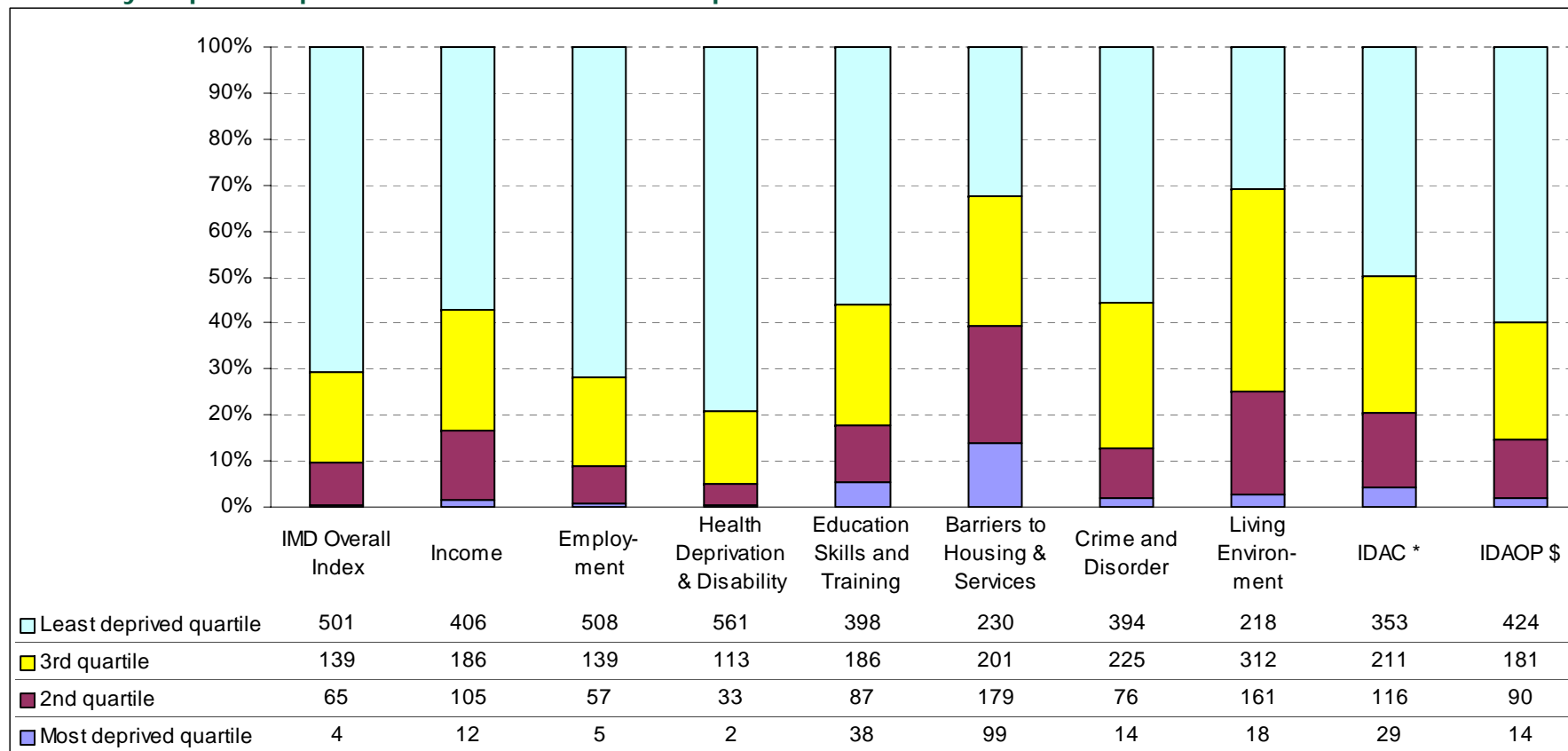
- According to the Index of Multiple Deprivation (IMD) published in 2007 by Communities and Local Government, Surrey is the least deprived shire county in England. Only the unitary authorities of Wokingham and Rutland are less deprived than Surrey.
- At district level all Surrey districts except Spelthorne are among the least deprived 10% in the country. Spelthorne ranks at 256 out of 354.
- The widely used IMD provides a measure of deprivation at a small area level. IMD combines 7 separate deprivation domains for about 32,500 small areas (super output areas) in England. Data is also provided for the 7 domains separately.
- Of Surrey's 709 super output areas, only four fall in England's most deprived 25%. The most deprived area, in Maybury and Sheerwater ward, ranks 4,371 in the country. The other areas in the most deprived quartile are parts of Stanwell North, Merstham and Westborough wards. At the other end of the scale, 43% of Surrey's super output areas are among England least deprived 10%.
- In 6 of the 7 domains, (and the supplementary "Income Deprivation Affecting Children" and "Income Deprivation Affecting Older People" which do not form part of the overall index) up to 5% of Surrey's super output areas are among England's most deprived quartile.
- However 99 (14%) of Surrey's super output areas are in the top quartile of the Barriers to Housing and Services domain, with the highest ranking 300th in England. The purpose of this domain is to measure barriers to housing and key local services. The indicators fall into two sub-domains: 'geographical barriers' which are road distance to GP, supermarket, primary school and post office, and 'wider barriers' which also includes issues relating to access to housing, such as affordability.

Source: Communities and Local Government

Surrey has few areas among the country's overall most deprived 25%, but 14% are in the most deprived quartile of the Barriers to Housing and Services domain.

➤ 2007 Index of Multiple Deprivation: Surrey Super Output Areas¹ in each national quartile

¹ Super Output Areas are subdivisions of wards, now widely used for official statistics

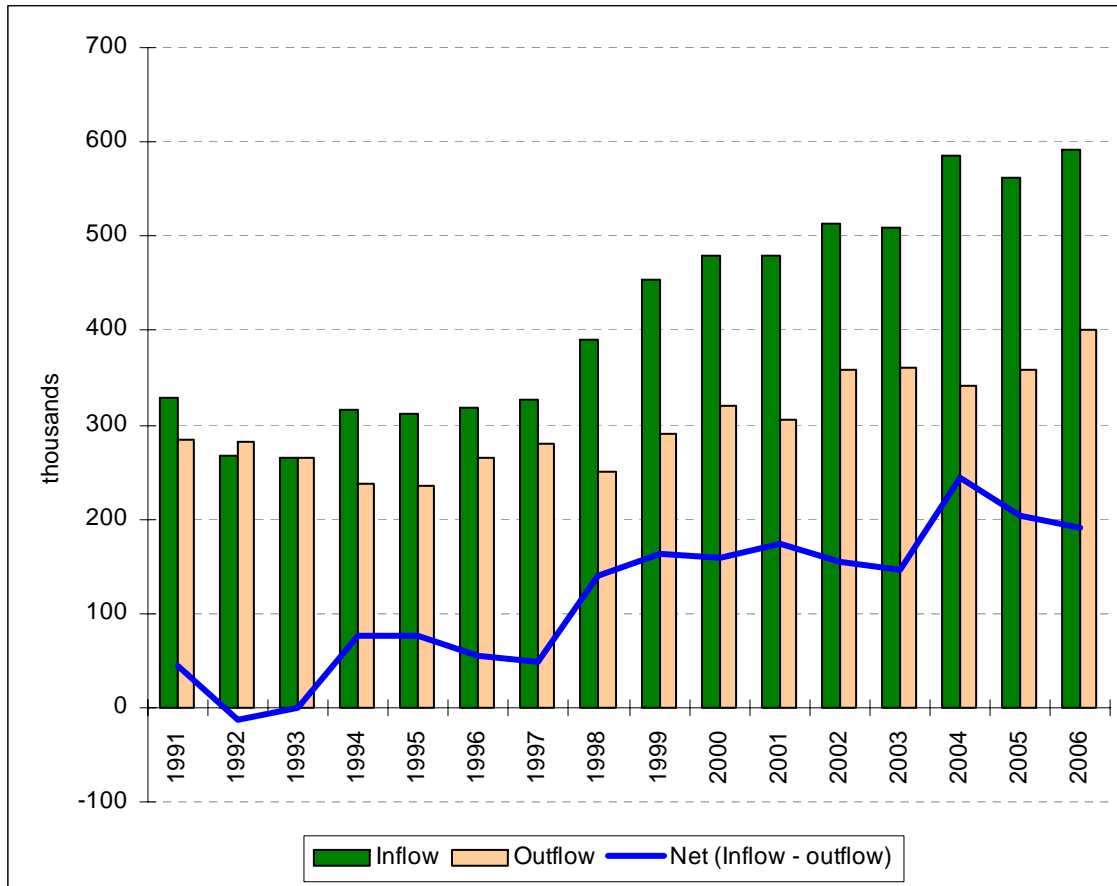


Source: Communities and Local Government

* Income Deprivation Affecting Children
\$ Income Deprivation Affecting Older People

Recorded immigration into the UK in 2006 reached a new record

➤ Inflow, Outflow and Net migration in the UK 1991-2006



Immigration into the UK in 2006 was estimated at 591,000 people, higher than in 2004 when the 8 Eastern European countries joined the EU

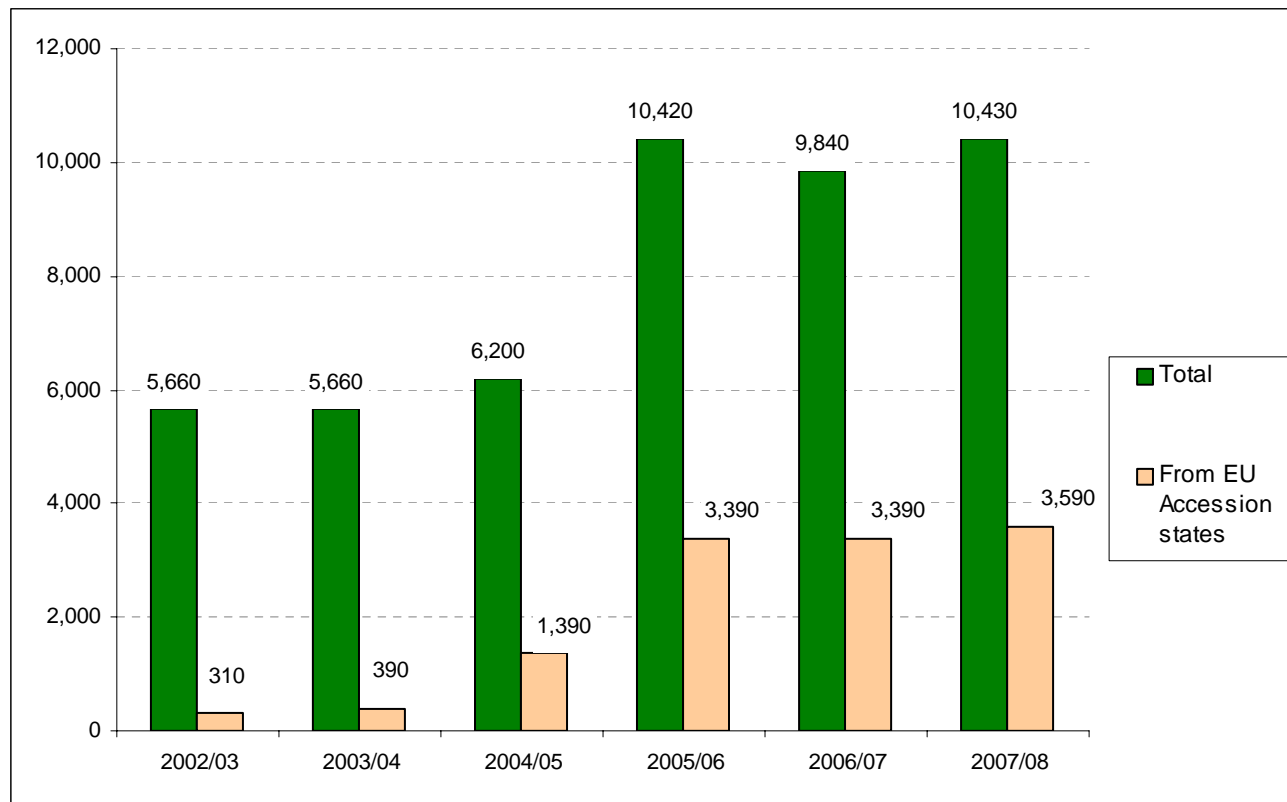
An average of 1600 immigrants arrived in the UK every day.

400,000 people left the UK with 207,000 British citizens leaving with the intention of staying away for at least 1 year.

Source: Office for National Statistics

Following the expansion of the European Union in May 2004 the number of foreign nationals living in Surrey who were allocated a National Insurance number rose from under 6,000 a year to around 10,000

➤ NI number allocations with an address in Surrey, 2002-08



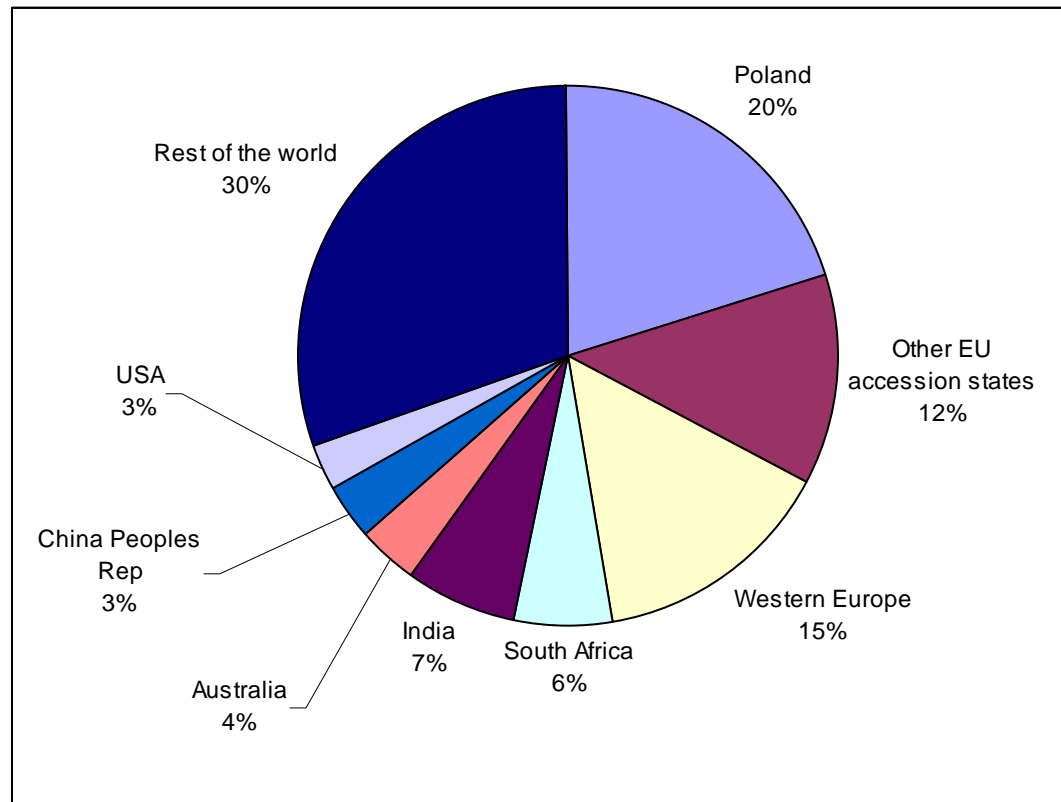
National Insurance number registrations can be used as an indicator of International Immigration.

The data cover overseas nationals allocated a National Insurance Number (NINo) on the National Insurance Recording System (NIRS). The figures cover overseas nationals allocated a NINo for whatever reason i.e. the figures cover benefit/tax credit recipients as well as workers. All overseas nationals allocated a NINo are included, regardless of their length of stay in the UK.

Source: Department for Work and Pensions

Of the 10,000 foreign nationals living in Surrey who were allocated a National Insurance number in the year to March 2008, 20% were Polish citizens

➤ Origins of NI number allocations with an address in Surrey, 2007-08



Source: Department for Work and Pensions